



Medina Railway Depot: 305 S. Court St.

In 1881, the freshly minted Pittsburgh, Akron, & Western (PAW) Railroad constructed the original rail line through the heart of South Town. The track ran from Delphos to Akron. Akron's rubber boom in the 1920's kept the rail line active through the middle of the 20th century.

In 1982, it was acquired by the Wheeling & Lake Erie Railroad. The depot was demolished in the mid 20th century.



Eggelston Blacksmith Shop: 113 W. Smith Rd.

Originally constructed in 1874 as Eggelston's Blacksmith Shop, this building served Medina's blacksmithing needs for more than half a century. Gil & Dreher opened a machine shop here in 1925, retaining the original brick facade and storefront. In 1946, it became the Medina Machine Shop. In 2009, the building was renovated and the facade was restored. Today, it is home to Thyme2, a fine-dining restaurant.



Holben Horseshoeing & Jobbing: E. Smith Rd.

From 1880 to 1912, J. Holben Horseshoeing & Jobbing stood at the corner of E. Smith Rd. and S. Court St. serving visitors at the adjacent Union House Hotel and local horse owners and farriers. By 1920, the Gibbs brothers purchased the property and the neighboring western lot and opened a car dealership.

Research provided by Robert Hyde, Beyond the Storefronts (www.medinasquare.org)

Download the History Walk brochure from our website at www.mainstreetmedina.com/South-Town-District.

South Town History

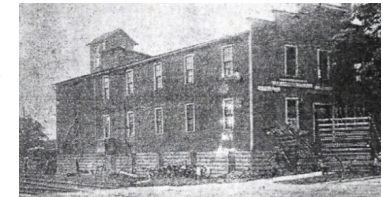
*Welcome to the South Town District:
Historic Medina's Industrial Roots*



South Court Street Industries

During the 1900s, S. Court St. was the main corridor into the "south end" of the Village of Medina. The Farmers Exchange functioned as a center of agricultural commerce for local grain and crops, the old Hickox Planing Mill was replaced by the Medina Marble and Granite Works, and B. H. Wood Flour & Feed Store operated along the Pittsburgh, Akron & Western Railroad.

*The original
Farmers Exchange*



*Medina Granite
& Marble Works*



*B.H. Wood Flour
& Feed Store*



